

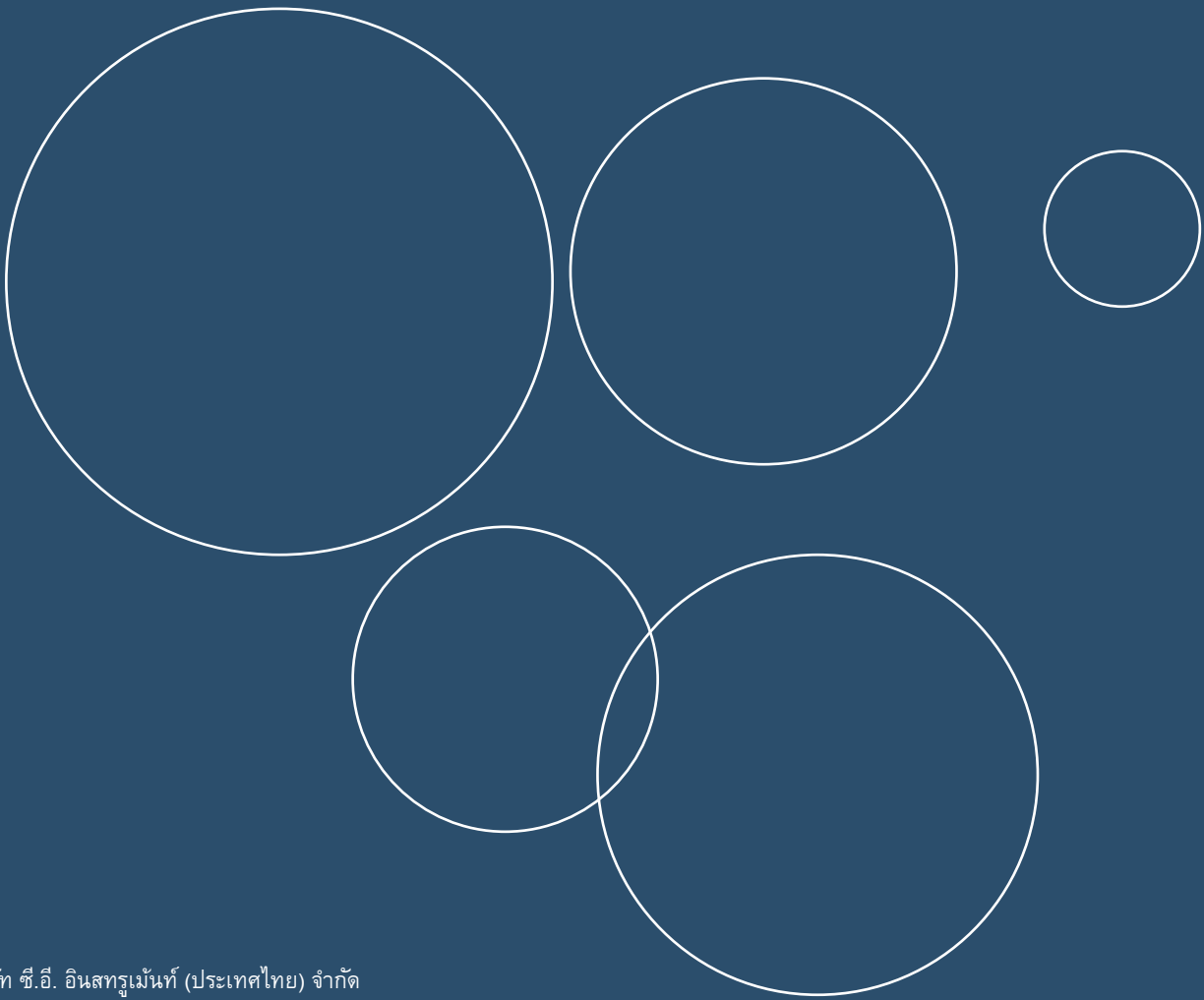
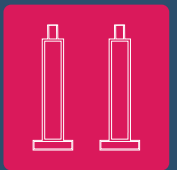
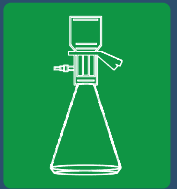
Focus on
laboratory sample filtration solutions

2019-2020

SCIDISC

Sample Filtration & Separation

Membrane filters



บริษัท ซี.อี. อินสทรูเมนต์ (ประเทศไทย) จำกัด
68/876 หมู่ 8 ถนนรัตนวิเบศร์ ต. บางกระสอ
อ. เมืองนนทบุรี จ. นนทบุรี 11000
โทรศัพท์ 02 9658971-3 โทรสาร 02 9658974

Email : sales@cethailand.com www.cethailand.com

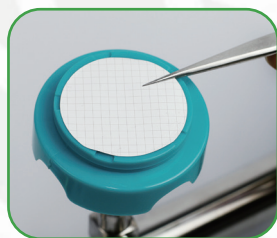


Tianjin Scichro Technologies Co., Ltd.



Satisfied any requires of Filtration process in Laboratory

Ensures good experimental accuracy with widely application in Pharmaceutical, Environmental, Biological, Food analysis, Agricultural test.



SCIDISC series Membrane filters

Membrane	Application
Mixed Cellulose Esters (MCE)	<ul style="list-style-type: none"> Dissolves Completely Using Standard Digestion Procedures. Cleans completely, possesses low artifacts, and offers minimal interference in fiber counting. Ideal for Aqueous Solutions. Low Protein Retention. 0.22µm for Fluid Sterilization. Naturally Hydrophilic.
Polyethersulfone (PES)	<ul style="list-style-type: none"> Ideal for use in Life Science Applications to Remove Particulates During General Filtration. Low Protein and Drug Binding Characteristics.
Nylon (NY)	<ul style="list-style-type: none"> Ideal for use in General Filtration or Medical Assays & HPLC Sample Preparation. High Protein Binding Capacity: Immobilizes Antigens, Antibodies & other Proteins. Naturally Hydrophilic.

BH Polypropylene (BHP)	<ul style="list-style-type: none"> HPLC Sample Prep Requiring Low Detection Levels. Aqueous & Organic Solvent Filtration. Ion Chromatography. Naturally Hydrophilic.
Polytetrafluoroethylene (PTFE)	<ul style="list-style-type: none"> Filtration of Strong Acids & Aggressive Solvents. Venting Applications. Phase Separations. Strong Hydrophobicity.
Polyvinylidene Fluoride (PVDF)	<ul style="list-style-type: none"> Sterilizing Filtration of Biological Solutions. Clarifying Filtration of Biological Solutions. Provides High Flow Rates & Throughput. Low Extractability & Broad Chemical Compatibility. Hydrophobic.
Glass Fiber (GF)	<ul style="list-style-type: none"> Use as a Pre-filter to Extend Membrane Life. Water & Air Pollution Analysis. Liquid Clarification.

Order Information

MCE

Item number	Description	Item number	Description
M13MC-022	13mm, 0.22µm, 100/pk	M60MC-022	60mm, 0.22µm, 100/pk
M13MC-045	13mm, 0.45µm, 100/pk	M60MC-045	60mm, 0.45µm, 100/pk
M13MC-080	13mm, 0.8µm, 100/pk	M60MC-080	60mm, 0.8µm, 100/pk
M25MC-022	25mm, 0.22µm, 100/pk	M70MC-022	70mm, 0.22µm, 100/pk
M25MC-045	25mm, 0.45µm, 100/pk	M70MC-045	70mm, 0.45µm, 100/pk
M25MC-080	25mm, 0.8µm, 100/pk	M70MC-080	70mm, 0.8µm, 100/pk
M47MC-022	47mm, 0.22µm, 50/pk	M90MC-022	90mm, 0.22µm, 100/pk
M47MC-045	47mm, 0.45µm, 50/pk	M90MC-045	90mm, 0.45µm, 100/pk
M47MC-080	47mm, 0.8µm, 50/pk	M90MC-080	90mm, 0.8µm, 100/pk
M50MC-022	50mm, 0.22µm, 50/pk	M100MC-022	100mm, 0.22µm, 100/pk
M50MC-045	50mm, 0.45µm, 50/pk	M100MC-045	100mm, 0.45µm, 100/pk
M50MC-080	50mm, 0.8µm, 50/pk	M100MC-080	100mm, 0.8µm, 100/pk

PES

Item number	Description	Item number	Description
M13ES-022	13mm, 0.22µm , 100/pk	M60ES-022	60mm, 0.22µm , 50/pk
M13ES-045	13mm, 0.45µm , 100/pk	M60ES-045	60mm, 0.45µm , 50/pk
M13ES-080	13mm, 0.8µm , 100/pk	M60ES-080	60mm, 0.8µm , 50/pk
M25ES-022	25mm, 0.22µm , 100/pk	M70ES-022	70mm, 0.22µm , 50/pk
M25ES-045	25mm, 0.45µm , 100/pk	M70ES-045	70mm, 0.45µm , 50/pk
M25ES-080	25mm, 0.8µm , 100/pk	M70ES-080	70mm, 0.8µm , 50/pk
M47ES-022	47mm, 0.22µm , 50/pk	M90ES-022	90mm, 0.22µm , 50/pk
M47ES-045	47mm, 0.45µm , 50/pk	M90ES-045	90mm, 0.45µm , 50/pk
M47ES-080	47mm, 0.8µm , 50/pk	M90ES-080	90mm, 0.8µm , 50/pk
M50ES-022	50mm, 0.22µm , 50/pk	M100ES-022	100mm, 0.22µm , 50/pk
M50ES-045	50mm, 0.45µm , 50/pk	M100ES-045	100mm, 0.45µm , 50/pk
M50ES-080	50mm, 0.8µm , 50/pk	M100ES-080	100mm, 0.8µm , 50/pk

NY66

Item number	Description	Item number	Description
M13NY-022	13mm, 0.22µm , 100/pk	M60NY-022	60mm, 0.22µm , 50/pk
M13NY-045	13mm, 0.45µm , 100/pk	M60NY-045	60mm, 0.45µm , 50/pk
M13NY-080	13mm, 0.8µm , 100/pk	M60NY-080	60mm, 0.8µm , 50/pk
M25NY-022	25mm, 0.22µm , 100/pk	M70NY-022	70mm, 0.22µm , 50/pk
M25NY-045	25mm, 0.45µm , 100/pk	M70NY-045	70mm, 0.45µm , 50/pk
M25NY-080	25mm, 0.8µm , 100/pk	M70NY-080	70mm, 0.8µm , 50/pk
M47NY-022	47mm, 0.22µm , 50/pk	M90NY-022	90mm, 0.22µm , 50/pk
M47NY-045	47mm, 0.45µm , 50/pk	M90NY-045	90mm, 0.45µm , 50/pk
M47NY-080	47mm, 0.8µm , 50/pk	M90NY-080	90mm, 0.8µm , 50/pk
M50NY-022	50mm, 0.22µm , 50/pk	M100NY-022	100mm, 0.22µm , 50/pk
M50NY-045	50mm, 0.45µm , 50/pk	M100NY-045	100mm, 0.45µm , 50/pk
M50NY-080	50mm, 0.8µm , 50/pk	M100NY-080	100mm, 0.8µm , 50/pk

PTFE

Hydrophilic

Item number	Description	Item number	Description
M13PT-022	13mm, 0.22µm , 100/pk	M60PT-022	60mm, 0.22µm , 50/pk
M13PT-045	13mm, 0.45µm , 100/pk	M60PT-045	60mm, 0.45µm , 50/pk
M25PT-022	25mm, 0.22µm , 100/pk	M70PT-022	70mm, 0.22µm , 50/pk
M25PT-045	25mm, 0.45µm , 100/pk	M70PT-045	70mm, 0.45µm , 50/pk
M47PT-022	47mm, 0.22µm , 50/pk	M90PT-022	90mm, 0.22µm , 50/pk
M47PT-045	47mm, 0.45µm , 50/pk	M90PT-045	90mm, 0.45µm , 50/pk
M50PT-022	50mm, 0.22µm , 50/pk	M100PT-022	100mm, 0.22µm , 50/pk
M50PT-045	50mm, 0.45µm , 50/pk	M100PT-045	100mm, 0.45µm , 50/pk

PVDF

Hydrophilic

Item number	Description	Item number	Description
M13PV-022	13mm, 0.22µm , 100/pk	M60PV-022	60mm, 0.22µm , 50/pk
M13PV-045	13mm, 0.45µm , 100/pk	M60PV-045	60mm, 0.45µm , 50/pk
M25PV-022	25mm, 0.22µm , 100/pk	M70PV-022	70mm, 0.22µm , 50/pk
M25PV-045	25mm, 0.45µm , 100/pk	M70PV-045	70mm, 0.45µm , 50/pk
M47PV-022	47mm, 0.22µm , 50/pk	M90PV-022	90mm, 0.22µm , 50/pk
M47PV-045	47mm, 0.45µm , 50/pk	M90PV-045	90mm, 0.45µm , 50/pk
M50PV-022	50mm, 0.22µm , 50/pk	M100PV-022	100mm, 0.22µm , 50/pk
M50PV-045	50mm, 0.45µm , 50/pk	M100PV-045	100mm, 0.45µm , 50/pk

BHP

Item number	Description	Item number	Description
M13BH-022	13mm, 0.22µm , 100/pk	M60BH-022	60mm, 0.22µm , 50/pk
M13BH-045	13mm, 0.45µm , 100/pk	M60BH-045	60mm, 0.45µm , 50/pk
M25BH-022	25mm, 0.22µm , 100/pk	M70BH-022	70mm, 0.22µm , 50/pk
M25BH-045	25mm, 0.45µm , 100/pk	M70BH-045	70mm, 0.45µm , 50/pk
M47BH-022	47mm, 0.22µm , 50/pk	M90BH-022	90mm, 0.22µm , 50/pk
M47BH-045	47mm, 0.45µm , 50/pk	M90BH-045	90mm, 0.45µm , 50/pk
M50BH-022	50mm, 0.22µm , 50/pk	M100BH-022	100mm, 0.22µm , 50/pk
M50BH-045	50mm, 0.45µm , 50/pk	M100BH-045	100mm, 0.45µm , 50/pk



GF

Item number	Description	Item number	Description
M13GF-045	13mm, 0.45µm , 100/pk	M60GF-045	60mm, 0.45µm , 25/pk
M13GF-080	13mm, 0.8µm , 100/pk	M60GF-080	60mm, 0.8µm , 25/pk
M25GF-045	25mm, 0.45µm , 50/pk	M70GF-045	70mm, 0.45µm , 25/pk
M25GF-080	25mm, 0.8µm , 50/pk	M70GF-080	70mm, 0.8µm , 25/pk
M47GF-045	47mm, 0.45µm , 25/pk	M90GF-045	90mm, 0.45µm , 25/pk
M47GF-080	47mm, 0.8µm , 25/pk	M90GF-080	90mm, 0.8µm , 25/pk
M50GF-045	50mm, 0.45µm , 25/pk	M100GF-045	100mm, 0.45µm , 25/pk
M50GF-080	50mm, 0.8µm , 25/pk	M100GF-080	100mm, 0.8µm , 25/pk

* Customize diameter of 120mm, 135mm, 142mm, 150mm, 200mm

* **HYDROPHILIC**
Water accepting or wetting.

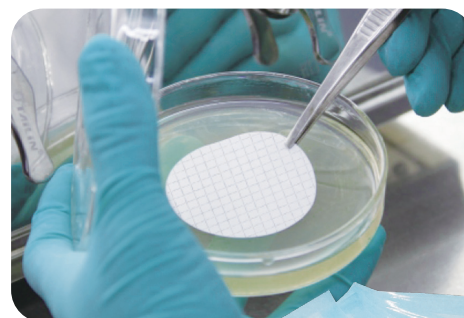
* **HYDROPHOBIC**
A membrane or other material which repels and cannot be wetted by aqueous and other high surface tension fluids. When pre-wetted with low surface tension fluid, such as alcohol, the filter will then wet with water.

Sterile Membrane filters

MCE WHITE / PLAIN

Single-pack , ETO(Ethylene oxide)

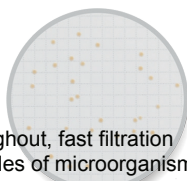
Ideal for microbiological test of aqueous solution, large throughout, fast filtration are applicable to water sample and other easily filtered samples of microorganisms Inspection ,also can be used for liquid micro particle removal and biological load reduction.



MCE WHITE / GRID

Single-pack , ETO(Ethylene oxide)

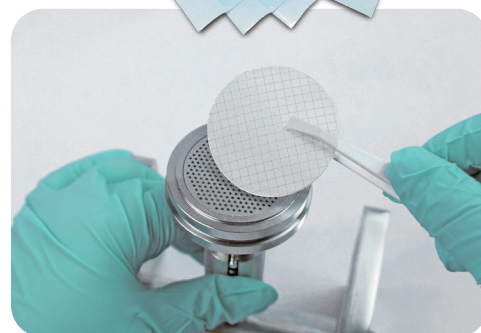
Ideal for microbiological test of aqueous solution, large throughout, fast filtration are applicable to water sample and other easily filtered samples of microorganisms Inspection ,also can be used for liquid micro particle removal and biological load reduction. Grid provide guidance for observation and counting analysis.



MCE BLACK / GRID

Single-pack , ETO(Ethylene oxide)

Ideal for microbiological test of aqueous solution, Dark background provides excellent contrast for counting opaque colonies in microbiology labs. Unique grid pattern gridline provides guidance for quantification of bacterial colonies without growth inhibition or enhance-ment. Sharp contrast between black membrane and white grid line provides guidance while viewing and counting.



Order Information

	Item number	Description	Sterile	Item number	Description	Sterile
MCE White / Plain	ETM47-WN022	47mm, 0.22µm , 100/pk	EtO	ETM50-WN022	50mm, 0.22µm , 100/pk	EtO
	ETM47-WN045	47mm, 0.45µm , 100/pk	EtO	ETM50-WN045	50mm, 0.45µm , 100/pk	EtO
	ETM47-WN080	47mm, 0.8µm , 100/pk	EtO	ETM50-WN080	50mm, 0.8µm , 100/pk	EtO
MCE White / Grid	ETM47-WG022	47mm, 0.22µm , 100/pk	EtO	ETM50-WG022	50mm, 0.22µm , 100/pk	EtO
	ETM47-WG045	47mm, 0.45µm , 100/pk	EtO	ETM50-WG045	50mm, 0.45µm , 100/pk	EtO
MCE Black / Grid	ETM47-BG022	47mm, 0.22µm , 100/pk	EtO	ETM50-BG022	50mm, 0.22µm , 100/pk	EtO
	ETM47-BG045	47mm, 0.45µm , 100/pk	EtO	ETM50-BG045	50mm, 0.45µm , 100/pk	EtO

* Customize Nylon66, PES, PVDF single-pack sterile membrane filter